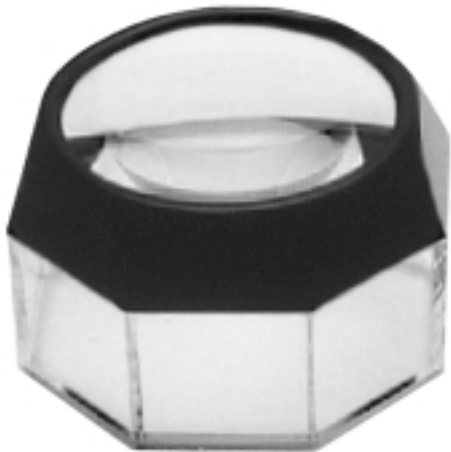


WIDE FIELD ASPHERIC MAGNIFIER

Features

- Two models to choose from:
 1. 3.5X optical quality glass lens
 2. 6X optical quality acrylic lens
- Large viewing area
- Clear acrylic base
- Attractive enough to be used as a paperweight



CATALOG #	OPGE8250	TS1820
POWER	6.0X	3.5X
LENS DIAMETER	2.36" (60mm)	2.38" (60mm)
FIELD OF VIEW	2" (51mm)	2" (51mm)
DIMENSIONS	3.3ø x 2" (83 x 51mm)	3.3ø x 2" (83 x 51mm)
WEIGHT	3.3 oz. (94g)	4.0 oz. (113g)
PRICE	\$18.50	\$31.70

DOUBLE LENS ASPHERIC MAGNIFIER

Features

- Optical quality acrylic lens
- Locking ring that sets focus for repeated use
- Cutaway base provides the room needed for critical touch-up and minute mechanical changes to the subject matter
- Clear acrylic base permits plenty of light to the subject being inspected

CATALOG #	OPGE8253
POWER	6X
LENS DIAMETER	1.32" (33.5mm)
FIELD OF VIEW	1.5" (38mm)
WORKING DISTANCE	1.25" (31.8mm)
DIMENSIONS	3.0 ϕ x 2.75" (76 ϕ x 70mm)
WEIGHT	3.3 oz. (94g)
PRICE	\$23.20



STAND MAGNIFIERS

Features

- Ideal for touch-up and inspection
- Cantilever design allows for the maximum amount of light on the item being examined as well as easy access to workspace under the magnifier

CB4206



CATALOG #	POWER	OVERALL DIMENSIONS	FOCAL LENGTH	LENS DIA.	WEIGHT	PRICE
CB4206	6X	3.25 ϕ x 2.38" (83 x 60mm)	2.00" (50mm)	2.00" (50mm)	1.5 oz. (43g)	\$32.90
CB4208	8X	3.25 ϕ x 2.38" (83 x 60mm)	1.73" (44mm)	1.38" (35mm)	1.2 oz. (34g)	\$38.20
CB4210	10X	2.63 ϕ x 1.50" (67 x 38mm)	1.42" (36mm)	1.10" (28mm)	1.3 oz. (37g)	\$41.60
CB4212	12X	2.63 ϕ x 1.50" (67 x 38mm)	1.34" (34mm)	0.91" (23mm)	0.9 oz. (26g)	\$45.10

BLACK STAND MAGNIFIERS

All the features of the stand magnifiers with this addition:

- Wide flat field of view

RECTANGLE



ROUND



CATALOG #	SHAPE	POWER	OVERALL DIMENSIONS	FOCAL LENGTH	LENS SIZE	WEIGHT	PRICE
DOA2028	round	5.0X	3.50 ϕ x 3.00" (90 ϕ x 76mm)	3.00" (76.2mm)	2.36" (60mm)	2.0 oz. (57g)	\$31.60
CB5428	round	5.4X	2.75 ϕ x 1.88" (70 ϕ x 48mm)	2.23" (56.6mm)	1.85" (47mm)	1.2 oz. (34g)	\$33.40
CB5123	round	7.0X	2.38 ϕ x 1.75" (60 ϕ x 44mm)	1.63" (41.3mm)	1.42" (36mm)	0.7 oz. (20g)	\$39.10
CB5472	rectangle	2.8X	3.75 x 4.75 x 3.38" (95 x 121 x 86mm)	5.42" (137.7mm)	3.86 x 2.91" (98 x 74mm)	8.4 oz. (238g)	\$50.90
DOA2072	rectangle	3.0X	3.25 x 4.25 x 4.50" (83 x 108 x 114mm)	3.00" (76.2mm)	2.00 x 4.00" (51 x 102mm)	5.0 oz. (142g)	\$46.30
CB5474	rectangle	3.5X	2.75 x 3.75 x 3.00" (70 x 95 x 76mm)	3.95" (100.2mm)	2.52 x 2.05" (64 x 52mm)	3.2 oz. (91g)	\$41.00

HAND-HELD MAGNIFIERS

Features

- Easy-to-grip handle fits comfortably in either hand
- Protective pouch included



DOA2060



CB5203

CB5206

CATALOG #	POWER	OVERALL DIMENSIONS	FOCAL LENGTH	LENS SIZE	WEIGHT	PRICE
CB5203	3X	7.50 x .75 x 3.62" (191 x 19 x 92mm)	5.0" (127mm)	3.20" (81mm)	4.3 oz. (122g)	\$49.00
DOA2060	5X	6.75 x .75 x 2.75" (171 x 19 x 70mm)	3.0" (76.2mm)	2.36" (60mm)	2.0 oz. (57g)	\$31.60
CB5206	6X	5.30 x .62 x 2.37" (135 x 16 x 60mm)	2.0" (51mm)	2.00" (50mm)	1.6 oz. (44g)	\$44.70